



**RIGA EGYPT**

**A HISTORY FULL OF ACHIEVEMENTS**

# Chairman & CEO Message:

Despite the adverse economic impact of the revolution on the country and the fluctuations experienced by local and international financial markets directly affecting the contracting activities, riga egypt was able to realize satisfactory growth rates due to concentrated efforts of its staff. no doubt that the flexible working plans, beside the board knowledge and valuable experience benefited from riga egypt. crew of engineers, foremen and technicians played a great role in the performance of the company as a whole, which led to the satisfaction and convince our clients and gave the power to open new markets.



**KHAYRI ABO EL-YAZEED**



# Safety Policy

RIGA EGYPT RECOGNIZES ITS MORAL AND LEGAL RESPONSIBILITIES TO PROVIDE SAFE AND HEALTHY WORK ENVIRONMENT FOR EMPLOYEES.

## OUR STATEMENT OF GENERAL POLICY

- PROVIDE ADEQUATE CONTROL OF THE HEALTH AND SAFETY RISKS ARISING FROM OUR WORK ACTIVITIES
- PROVIDE A SAFE WORK ENVIRONMENT AND ADEQUATE TRAINING FOR ALL EMPLOYEES
- CONSULT WITH OUR MAINTAIN SAFE PLANT AND EQUIPMENT
- ENSURE SAFE HANDLING AND USE OF SUBSTANCES.
- PROVIDE INFORMATION, INSTRUCTION AND SUPERVISION FOR EMPLOYEES
- ENSURE ALL EMPLOYEES ARE COMPETENT TO DO THEIR TASKS AND TO GIVE THEM ADEQUATE TRAINING
- PREVENT ACCIDENTS AND CASES OF WORK RELATED ILL HEALTH
- MAINTAIN SAFE AND HEALTHY WORKING RELATIONS.
- ENSURE THAT THIS POLICY IS PERIODICALLY REVIEWED AND APPLIED TO ALL OF OUR EMPLOYEES AND OPERATION CRANES

# Introduction

RIGA COMPANY IS STOCK COMPANY FOUNDATION ACCORDANCE WITH THE PROVISIONS OF EGYPTIAN LAW NO. 8 OF 1997 AND ESTABLISHED ACCORDING TO THE PROVISIONS OF THE LAW ON INVESTMENT INCENTIVES AND FREE ZONES RESOLUTION NO. 575 OF 2006 ON THE LICENSE TO ESTABLISH A COMPANY. RIGA EGYPT HAD MADE MANY PROJECTS IN EGYPT, LIBYA, JORDON, IRAQ, BAHRAIN, SAUDI ARABIA AND CHAD.

## BUSINESS SCOPE

- FABRICATION OF NON-STANDARD EQUIPMENT SUCH AS FILTERS, DEDUSTING DUCTS, CYCLONES, TANKS, AND STEEL STRUCTURE OF DIFFERENT SIZES AND WEIGHTS.
- ERECTION OF MECHANICAL AND ELECTRICAL EQUIPMENT OF HEAVY INDUSTRY.
- TURN KEY PROJECTS
- REHABILITATION, MAINTENANCE, OVERHAUL AND REPLACEMENT.
- REPLACEMENT OF KILN AND MILLS SECTIONS.
- OPERATION & MAINTENANCE TOTAL MANAGERMENTS.
- AUDITS.
- TECHNICAL ASSISTANTS.
- TRAINING & COURSES.

## VISION

RIGA EGYPT DREAMS TO BE THE PREMIER IN IMPLEMENTATION OF ENGINEERING PROJECTS BY ACHIEVING EXTRAORDINARY RESULTS FOR OUR CUSTOMERS, BUILDING SATISFYING CAREER FOR OUR EMPLOYEES AND EARNING A FAIR RETURN ON THE VALUE WE DELIVER.

## MISSION

RIGA COMPANY WORKS IN MECHANICAL ENGINEERING INDUSTRY SPECIALIST IN MANUFACTURING, AND TRANSPORT TO THE SITE OF OWNER, STEEL STRUCTURE PLATE WORK, AND ENGINEERING WORKS, CARRY OUT THE COMPLETE ERECTION OF ALL MACHINERY, EQUIPMENT AND ACCESSORIES, ELECTRICAL AND AUTOMATION WORKS, OPERATION AND MAINTENANCE TOTAL MANAGEMENT FOR FACTORIES, MAKING AUDITS FOR FACTORIES, GIVING TRAINING AND COURSES WITH PROFESSIONAL INSTRUCTORS.

# Project 2008 – 2009 – Royal El Minya

SUPPLY, FABRICATION, MECHANICAL ERECTION, INSULATION, PIPING SYSTEM AND ELECTRIC WORKS.  
FABRICATION OF PREHEATER BUILDING, CYCLONES, CALCINER, DUCTING SYSTEM, CHIMNEY AND BELT CONVEYORS.



**Erection of Raw Mill Area.**



**Erection of Vertical Mill.**



**Unloading of Kiln Section**



**Erection of Kiln.**



# Project 2008 – 2009 – Mirs Beni Suif

**Erection of Raw Mill Area.**



**Raw Mill Building**



**Raw Mill Building**



**Erection of Raw Mill**



**Erection of Mill liner**



**Unloading of Raw Mill**



**Erection of Collecting plate**

# Project 2009 – SINAI Cement White

**Erection of Cement Mill.**



**Unloading of Cement Mill Section**



**Erection of Cement Mill Section**



**Erection of Diaphragm**



**Assembly of Cement Mill**



**Erection of shoe bearing**



# Project 2009 – South Valley

**Erection of Cement Mill Building & Raw Mill Transportation**



**Cement Mill**



**Cement Mill Diaphragm Liner**



**The way to Cement Mill building**



**Cement Mill Building & Silos**



**Gypsum Reclaimer**



**Gypsum Belt Conveyor**



**Cement Mill Silo Aeration System**



**Cement Mill Bag Filter**



# Project 2010 – Marutia, Malawi and El Mansuria Bridges

RIGA has Constructed Three Bridges in different Location and time with it's experienced Staff.



After Erection of Marutia Bridge



During Erection of Marutia bridge



Marutia bridge about 1500 ton (Faisl & Haram street)



Malawi Bridge about 1600 ton

## Project 2010 – Marutia, Malawi and El Mansuria Bridges



**Mansuria Extension**



**Mansuria Extension**



RIGA has Constructed Three Bridges in different Location and time with it's experienced Staff.



## Project 2010 – Arabian Cement Company II (ACC II)

**Erection of Zone 1 & Zone 3**



**Cement Mill Building**



**Erection of Cement Mill section**



**Transportation Equipment**



**Cement Mill Bag Filter**



## Project 2010 – Arabian Cement Company II (ACC II)



**Cement Mill Section**



**Fuel Tank**



**Bucket Elevator & Silo  
Steel Structure**

RIGA has Constructed Z1 & Z3 including Packing, Cement Silo, Cement Mill Building (Cement Mill, Separators, Bucket Elevators, Ducts and Transportation equipment),

## Project 2010 – Arabian Cement Company II (ACC II)



## Project 2011 – 2012 – EPAP II

Erection Work



Lifting of Cooler Bag Filter



## Project 2011 – 2012 – EPAP II



## Project 2011 – 2012 – EPAP II





## Maintenance 2012

### **Replacement of Kiln Girth Gear - Helwan Cement - 2012**



**lifting of girth gear**



**Girth Gear assembly work**

### **Vertical Mill Roller Rehabilitation - Sinai Grey Cement Erection of Vertical Mill Rollers**





# Maintenance 2012

## Replacement of Kiln Section and Rehabilitation of Cooler- Suez Cement Co.



**Replacement of Cooler Liner and adjusting**



**Lifting for Kiln Section**

## Replacement of Raw Mill heavy Section & Liners - Suez Cement Plant

**Loading the Raw Mill Section**



**Dismantling of Raw Mill Section**



# Projects 2013

Calcium Carbonat Beni suef



# Projects 2014

Helwan cement Plant Conversion of ESP Filters into Fabric Filter Project





## Projects 2014

### **Kattamya Cement Plant**

#### **Conversion of ESP Filters into Fabric Filter Project**



# Projects 2014

**Kattamya cement Plant  
Coal Mill plant Erection**





## Projects 2015

ASSUIT CEMEX Plant Pulverized pet coke and coal dosing system hopper 2, 3





# Projects 2015



**ESP Filter**



**Erection of Cement Mill**



**White Cement Line**



**Compressor Room**



**Insulation work**



**Erection of Raw Mill Area.**

# Maintenance



**Replacement of inlet cone and inlet bend for bypass GCT - NLS in ACC II 2012**



**Replacement of Kiln three heavy section Zilten - Libya - 2010**



**Replacement of two Raw Mill A & B GCT - TOURAH Plant II 2011**



**Replacement of Kiln Section - TOURAH Plant II Line 9 - 2010**



# Maintenance



**Replacement of sections in Raw Mill  
A & B TOURAH Plant II Line 8 - 2011**



**Replacement of Tertiary air duct  
TOURAH Plant II 2011**



**Cutting of Kiln Section - TOURAH  
Plant II Line 9 - 2010**



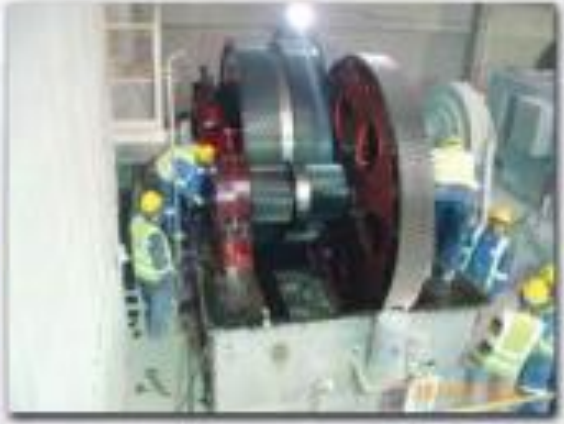
**Replacement of Diaphragm - TOURAH  
Plant II Line 9**



# Maintenance



**Upgrading for increasing of Raw Mill Capacity 15 % TITAN Alex. - 2008**



**Replacement of Semetro Gear TITAN Alex. - 2008**



**Rehabilitation of Lime Stone Crusher - TITAN beni suif - 2010**



**Replacement of Kiln Section - Libya -2010**



**Rehabilitation of cooler - TOURAH - 2008**

# Filters



**Erection of Bypass, Clinker Cooler, Raw Mill A & B Bag Filter TOURAH Plant II Line 8 - 2011-2012**



**Erection of Raw Mill A & B Bag Filter - TOURAH Plant II Line 8 - 2011-2012**



# Filters



**Erection of ESP Filter - Royal El Minya - 2008**



**Erection of ESP Filter - Misr Beni Suef - 2008**



**Replacement of Bypass ESP filter - TITAN - 2008**



**Erection of Bag filter; About 30 filters was erected in Arabian Cement Line II - 2010**



**Erection of ESP Filter - Misr Beni Suef - 2008**



# Saudi Arabia Projects

**AL Jouf plant Cement Mill welding Trinion Cracks**



**Yamama heavy Section Replacement**



2017

**Erection of vertical cement mill and packing at El-Sewdy Cement Company**



# Saudi Arabia Projects 2017





# Saudi Arabia Projects

**Yamama Cement Silo textile Replacement**



**Erection of 2200 tons Steel Structure King Khaled international air port ( terminal 5 )**



# Bahrain Projects 2017 - 2018

**Alba - Bahrain**



**Bahrain Projects 2018**  
**Bectel - Bahrain**



# Bahrain Projects





# Iraq Projects – Kubaisa Cement Plant

## Operation & Maintenance Total Management



# Iraq Projects – Al Qaim Cement Plant

## Operation & Maintenance Total Management



# Chad Projects - Societe Nationale Ciment

## Operation & Maintenance Total Management





# Chad Projects - Societe Nationale Ciment

## Operation & Maintenance Total Management



# Erection Contracts

## 2007

- REHABILITATION OF TWO ESP FILTERS – TITAN BENI SUEF
- FABRICATION & ERECTION OF RAW MILL FILTERS DUCTS 80 TON – TITAN BENI SUEF
- ERECTION OF 2 E.P FILTER – ARABIAN CEMENT COMPANY (LINE 1)

## 2008

- ERECTION OF CEMENT MILLS AREA INCLUDING 3 CEMENT SILOS AND RE-CLAIMER – SOUTH VALLEY CEMENT
- TURNKEY PROJECT ROYAL WHITE CEMENT PLANT EL-MINYA 900 T/D (FABRICATION, MECHANICAL ERECTION AND ELECTRICAL ERECTION)
- REPLACEMENT OF 3 CHIMNEY (BYPASS, RAW MILL A & RAW MILL B) – TITAN BENI-SUEF
- REHABILITATION OF ESP FILTER (BYPASS FILTER) – TITAN BENI SUEF
- RAW MILL DEPARTMENT ERECTION – MISR BENI SUEF PLANT
- MAJOR OVERHAUL MAINTENANCE KILN NO. 9 – TOURAH CEMENT PLANT
- MAJOR OVERHAUL MAINTENANCE – SUEZ CEMENT PLANT
- MAJOR OVERHAUL MAINTENANCE – KATTAMYA CEMENT PLANT
- UPGRADING TITAN ALEX PLANT TO INCREASE THE RAW MILLS CAPACITY 15%.
- OVERHAUL MAINTENANCE AND REPLACEMENT OF KILN SECTION – HELWAN CEMENT PLANT
- MAJOR OVERHAUL MAINTENANCE – TITAN BENI SUEF
- REPLACEMENT OF GEARBOX OF CEMENT MILL – SINAI GREY CEMENT PLANT
- ERECTION OF THE CONE FOR GAS CONDITIONING TOWER – SINAI GREY CEMENT PLANT
- ERECTION OF CEMENT MILL -SINAI WHITE CEMENT

## 2009

- FABRICATION & ERECTION OF PALLETIZING PLANT – SINAI WHITE CEMENT
- ERECTION CONTRACT FOR RAW MILL FEED AREA Z1 – ARABIAN CEMENT COMPANY
- ERECTION CONTRACT FOR GYPSUM CRUSHER TO PACKING PLANT INCLUDING SILOS AND MILLS) – ARABIAN CEMENT COMPANY
- ERECTION OF MARUOTAYA BRIDGE 1700 TON – GIZA
- ERECTION OF MALAWY BRIDGE 1800 TON – MINYA
- REPLACEMENT OF SEMETORO GEAR – TITAN CEMENT PLANT ALEX

## 2010

- REPLACEMENT OF 2 KILN SECTION – TOURAH CEMENT PLANT
- FABRICATION & ERECTION OF GRATE COOLER – SOUK EL-KHAMES (LIBYA)
- REPLACEMENT OF SEMETORO GEAR MILL – TOURAH CEMENT PLANT
- OVERHAUL MAINTENANCE – KATTAMYA CEMENT PLANT
- REPLACEMENT OF KILN HEAVY SECTION WITH TYRES – ZILETEN PLANT (LIBYA)
- REPLACEMENT OF SEMETORO GEAR BEARING – TITAN ALEX
- REPLACEMENT OF TOP CONE AND PIPES FOR GCT AND KILN REHABILITATION – KATTAMYA CEMENT PLANT
- REPAIRING OF LIME STONE BRIDGE – HELWAN CEMENT COMPANY
- REPLACEMENT OF KILN SECTION & GIRTH GEAR KILN NO. 5 – HELWAN CEMENT PLANT
- REPLACEMENT OF CEMENT MILL NO. 4 TRUNION – HELWAN CEMENT COMPANY

## 2011

- FABRICATION & ERECTION OF TERTIARY AIR DUCT FOR LINE 9 – TOURAH CEMENT PLANT
- CIVIL & MECHANICAL ERECTION OF PETER PUMP & COMPRESSOR OF CEMENT MILL 5&6 – TOURAH CEMENT PLANT
- CONVERSION OF ESP FILTERS INTO BAG FILTERS (COOLER GRAVEL BED FILTER, BYPASS AREA, RAW MILL A&B – TOURAH CEMENT PLANT
- CIVIL WORK FOR EPAP PROJECT – TOURAH CEMENT PLANT
- FABRICATION AND REPLACEMENT OF GCT FOR RAW MILL A&B – TOURAH CEMENT PLANT
- FABRICATION AND ERECTION OF COOLER MODIFICATION, KILN PLATFORM MODIFICATION – TOURAH CEMENT PLANT
- REHABILITATION OF BYPASS BUCKET ELEVATOR, RAW MILL B BUCKET ELEVATOR – TOURAH CEMENT PLANT
- DESIGN, FABRICATION CIVIL WORK AND MECHANICAL ERECTION OF CHIMNEY STAIR 95 TON – KATTAMYA CEMENT PLANT
- REPLACEMENT OF RAW MILL A&B SECTIONS – TOURAH CEMENT PLANT
- REPLACEMENT OF TERTIARY AIR DUCT FOR KILN 8 – TOURAH CEMENT PLANT
- REPLACEMENT OF GIRTH GEAR AND PINION FOR CEMENT MILL 4 – NATIONAL CEMENT COMPANY
- SUPPLY AND ERECTION OF STEEL STRUCTURE AND PLATE WORK – AL-MADINA GYPSUM FACTORY SUEZ COMPANY



## 2012

- MAINTENANCE WORK FOR FILTERS – TOURAH CEMENT PLANT
- REPAIR CRACKS FOR TRINION & ALIGNMENT FOR CEMENT MILL – AL-JOUF CEMENT PLANT (KSA)
- DRIVE ASSEMBLY & ALIGNMENT FOR CM#10 – TOURAH CEMENT PLANT
- SAFETY WORK IMPLEMENTATION – KATTAMYA CEMENT PLANT
- REPLACEMENT OF RM1 SECTION – SUEZ CEMENT PLANT
- CIVIL WORK CUTTING OF RM BUILDING BEAM – SUEZ CEMENT PLANT
- OVERHAULING COOLER LINE 1 – SUEZ CEMENT PLANT
- REPLACEMENT OF KILN SECTION 17M LINE 1 – SUEZ CEMENT PLANT
- OVERHAULING COOLER, CRUSHER, LAMINATED CLINKER PAN CONVEYOR, BYPASS AND ID FAN LINE 2 – HELWAN CEMENT PLANT
- OVERHAULING FOR PREHEATER ID FAN – HELWAN CEMENT PLANT
- REPLACEMENT OF GIRTH GEAR AND GEAR BOX FOR LINE 1 – HELWAN CEMENT PLANT
- REPLACEMENT OF ALL LINING FOR RAW MILL LINE 1 – HELWAN CEMENT PLANT
- OVERHAULING OF RAW MILL LINE 1 – HELWAN CEMENT PLANT
- INSTALLING PLATFORM FOR BYPASS STACK – HELWAN CEMENT PLANT
- REPLACEMENT OF KILN COOLING JACKET – TITAN BENI SUEF
- REPLACEMENT PINION BEARING FOR RAW MILL – TITAN BENI SUEF
- REPLACEMENT FOR PADS KILN UNDER TIRE AND INNER PIPE – TITAN BENI SUEF
- MAINTENANCE FOR LIMESTONE FEEDER – TITAN ALEX
- REHABILITATION FOR SEPARATOR FOR VERTICAL MILL – SINAI GREY CEMENT LINE 1
- MAINTENANCE THE ROLLERS FOR VERTICAL MILL – SINAI GREY CEMENT
- MAINTENANCE FOR DYNAMIC SEPARATORS FOR RAW MILL – MISR BENI SUEF
- ERECTION OF NOISE CHUTES – ARABIA CEMENT COMPANY
- MAINTENANCE WORK AT DIFFERENT AREA – KUBAISA CEMENT PLANT (IRAQ)
- MAINTENANCE WORK AND REHABILITATION FOR R.S.P – KUBAISA CEMENT PLANT (IRAQ)
- INSTALLATION OF CLADDING FOR ALKAI TOWER – KUBAISA CEMENT PLANT (IRAQ)
- FABRICATION AND INSTALLATION OF SPRAYING SYSTEM – SUEZ CEMENT PLANT
- ERECTION OF FUEL TANKS 340 TONS – SINAI CEMENT PLANT

## 2013

- REPLACEMENT OF BASE FRAME FOR CM MAIN GEAR BOX – TOURAH CEMENT PLANT
- ERECTION OF EL-NASR BRIDGE ABOUT 1400 TONS – ALEXANDRIA
- DESIGN, FABRICATION, CIVIL AND ERECTION WORKS OF WIND SCREEN – SUEZ CEMENT PLANT
- FABRICATION & INSTALLATION OF TRUCK LOADER STRUCTURE – SUEZ CEMENT PLANT
- CALCIUM CARBONATE PLANT – BENI SUEF

## 2014

- ERECTION FOR CONVERSION OF ESP FILTERS INTO FABRIC – HELWAN CEMENT PLANT
- ERECTION OF COAL MILL – KATTAMYA CEMENT PLANT
- ERECTION FOR CONVERSION OF ESP FILTERS INTO FABRIC – KATTAMYA CEMENT PLANT

## 2015

- ERECTION OF PULVERIZED PET COKE AND COAL DOSING SYSTEM HOPPER – CEMEX ASSUIT CEMENT PLANT
- ERECTION OF COAL MILL PLANT – EL-SEWEDY CEMENT PLANT

## 2016

- ERECTION OF VERTICAL MILL AND PACKING PLANT – EL-SEWEDY CEMENT PLANT
- ABO ZAABAL NOS333 MECHANICAL ERECTION
- CHANGE 3EP FILTERS FOR CEMENT TO BAG FILTERS WITH SCHEUCH – YANBU CEMENT COMPANY (KSA)
- REPLACEMENT OF CEMENT MILLS #9&10 SHELL AND DIAPHRAM AND BUCKET ELEVATOR – HOFUF CEMENT PLANT (KSA)

## 2017

- ERECTION OF VERTICAL MILL AND PACKING PLANT – EL-SEWEDY CEMENT PLANT
- ABO ZAABAL NOS333 MECHANICAL ERECTION
- CHANGE 3EP FILTERS FOR CEMENT TO BAG FILTERS WITH SCHEUCH – YANBU CEMENT COMPANY (KSA)
- REPLACEMENT OF CEMENT MILLS #9&10 SHELL AND DIAPHRAM AND BUCKET ELEVATOR – HOFUF CEMENT PLANT (KSA)

## 2018

- GENERAL MAINTENANCE – KATTAMYA CEMENT PLANT
- GENERAL REHABILITATION – KUBAISA CEMENT PLANT (IRAQ)
- GENERAL MAINTENANCE – HOFUF CEMENT PLANT (IRAQ)
- GENERAL MAINTENANCE – AL-JOUF CEMENT PLANT (KSA)

## 2019

- ERECTION WORK POWER PLANT – ALBA (BAHRAIN)
- ERECTION WORK CEMENT PLANT – ALBA (BAHRIAN)
- GENERAL OVERHAUL LINE 1&2 – SAUDI CEMENT (KSA)
- DISMANTLING TWO DIESEL GENERATORS (WARTSILA) – NAGA HAMADI FIBER BOARD (DESHNA SITE)





# Operation & Maintenance Management Contracts

## 2012

- MAINTENANCE FOR FILTERS – TOURAH CEMENT PLANT
- OPERATION & MAINTENANCE TOTAL MANAGEMENT - AL-QAIM CEMENT PLANT (IRAQ)
- OPERATION & MAINTENANCE TOTAL MANAGEMENT – KUBAISA CEMENT PLANT (IRAQ)

## 2014

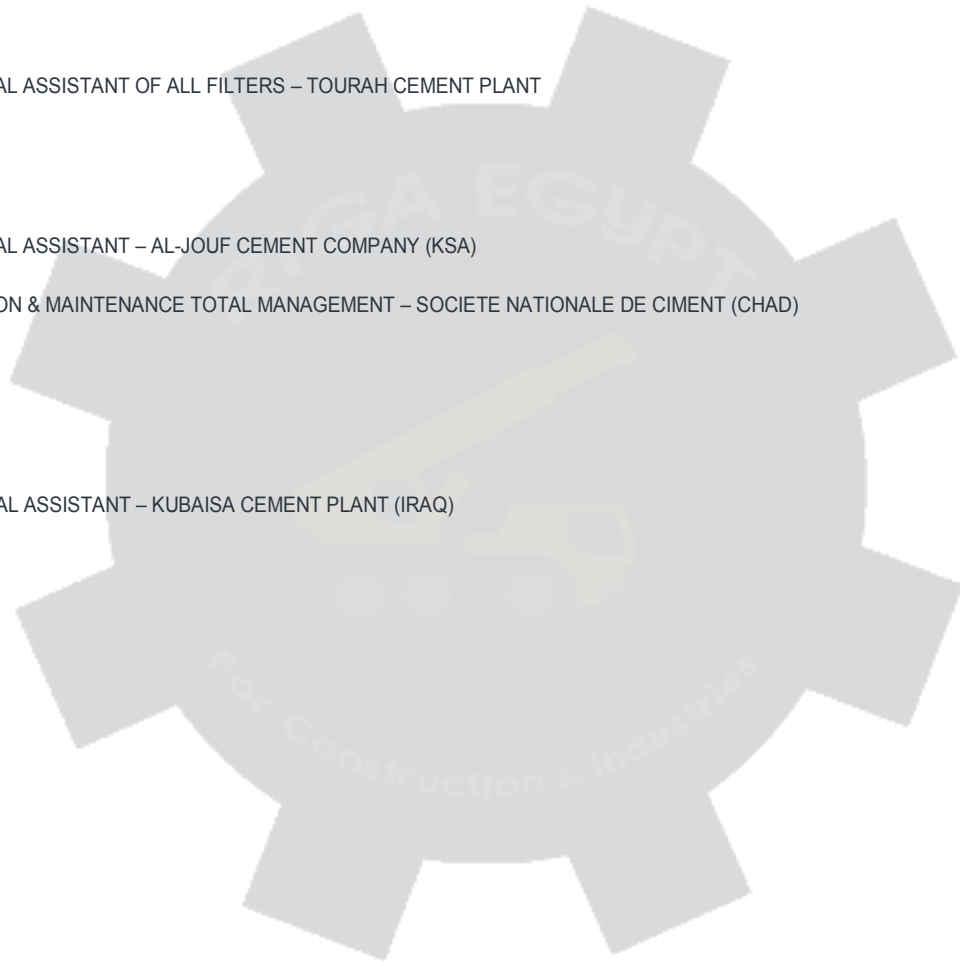
- TECHNICAL ASSISTANT OF ALL FILTERS – TOURAH CEMENT PLANT

## 2018

- TECHNICAL ASSISTANT – AL-JOUF CEMENT COMPANY (KSA)
- OPERATION & MAINTENANCE TOTAL MANAGEMENT – SOCIETE NATIONALE DE CIMENT (CHAD)

## 2019

- TECHNICAL ASSISTANT – KUBAISA CEMENT PLANT (IRAQ)



# Audits Contracts

## 2012

- AUDIT FOR AL-QAIM CEMENT PLANT (IRAQ)

## 2014

- AUDIT FOR AL-MUTHANNA CEMENT PLANT (IRAQ)

## 2016

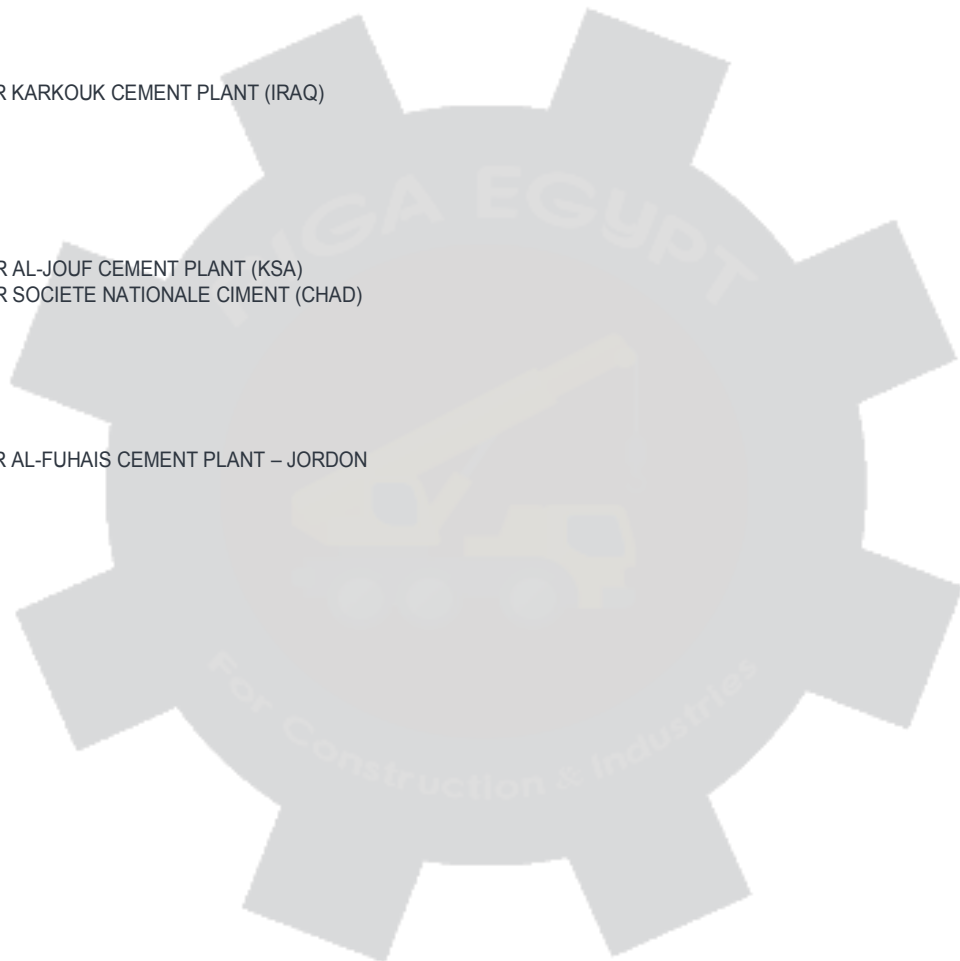
- AUDIT FOR KARKOUK CEMENT PLANT (IRAQ)

## 2018

- AUDIT FOR AL-JOUF CEMENT PLANT (KSA)
- AUDIT FOR SOCIETE NATIONALE CIMENT (CHAD)

## 2019

- AUDIT FOR AL-FUHAIS CEMENT PLANT – JORDON



# Fabrication Contracts

- FABRICATION OF 1600 TON PLATE WORK AND STEEL STRUCTURE – ROYAL EL-MINYA WHITE CEMENT
- FABRICATION OF 150 TON DUCTING – SOUTH VALLEY
- FABRICATION OF 70 TON FOR K.H.D FOR COOLER – LIBYA
- FABRICATION OF DUCTING – HELWAN, TOURAH AND KATTAMYA CEMENT PLANTS
- FABRICATION OF DUCTING – ARABIAN CEMENT PLANT
- FABRICATION OF DUCTING – SINAI GREY CEMENT
- FABRICATION OF STEEL STRUCTURE – SINAI WHITE CEMENT
- FABRICATION OF 3 STACKS – BENI SUEF TITAN
- FABRICATION OF STEEL STRUCTURE AND PLATE WORK – AL-MADINA GYPSUM FACTORY SUEZ
- FABRICATION OF SCREEN WIND STRUCTURE – SUEZ CEMENT PLANT
- FABRICATION OF SHEET METAL ROLLING FOR DRYER – HY TECHNOLOGIES
- FABRICATION OF BASE FRAME FOR CM MAIN GEARBOX – TOURAH CEMENT PLANT
- FABRICATION OF SAFETY WORKS, IMPLEMENTATION PLATFORM, HANDRAILS AND GRATINGS – KATTAMYA CEMENT PLANT
- FABRICATION OF CALCIUM CARBONATE PLANT STEEL STRUCTURE







71 El-Nasr Street, New Maadi  
Cairo – Egypt  
0225195930  
[info@rigaegypt.net](mailto:info@rigaegypt.net)  
[www.rigaegypt.net](http://www.rigaegypt.net)